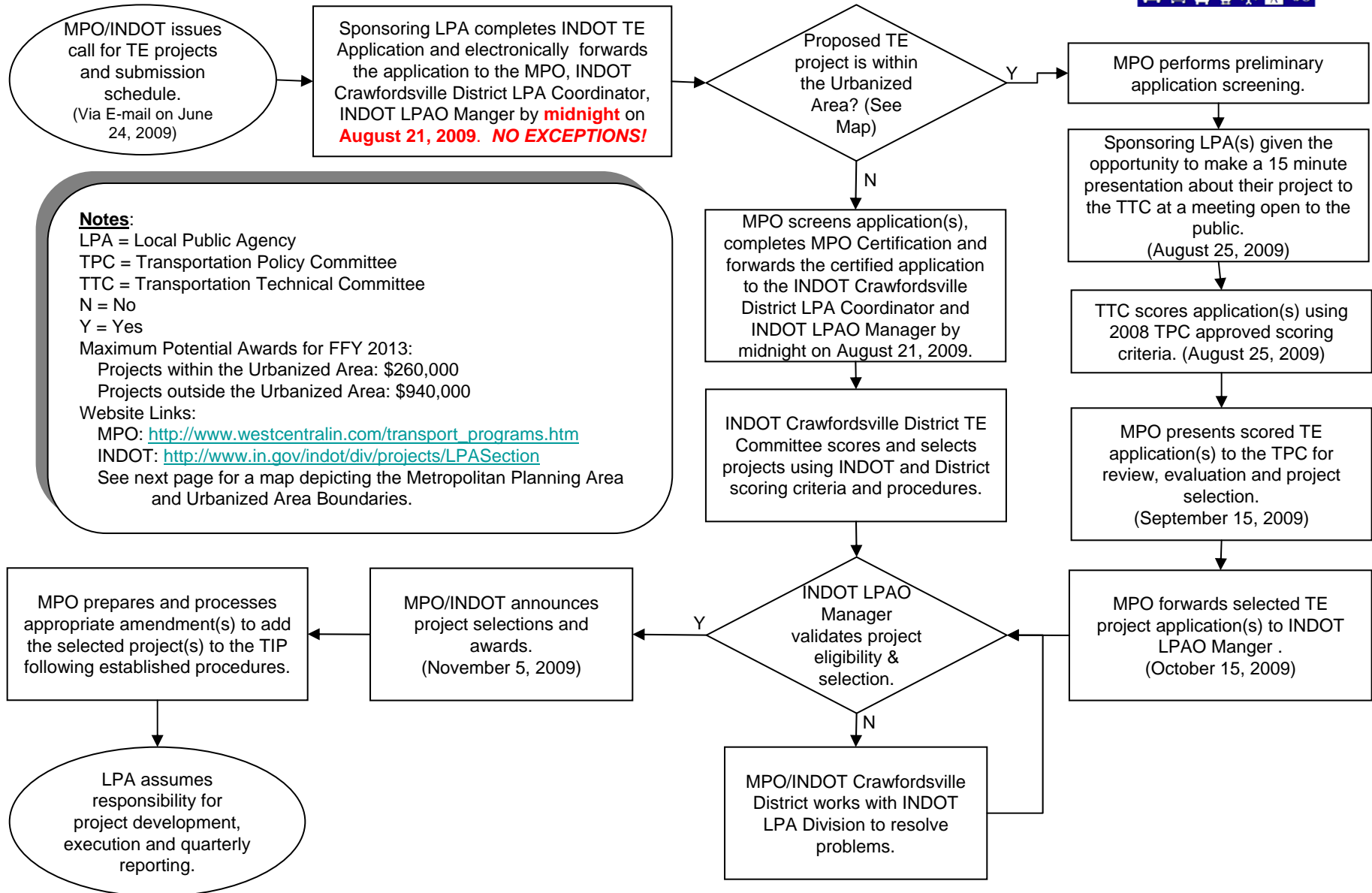


Local Transportation Enhancement Project Development Process

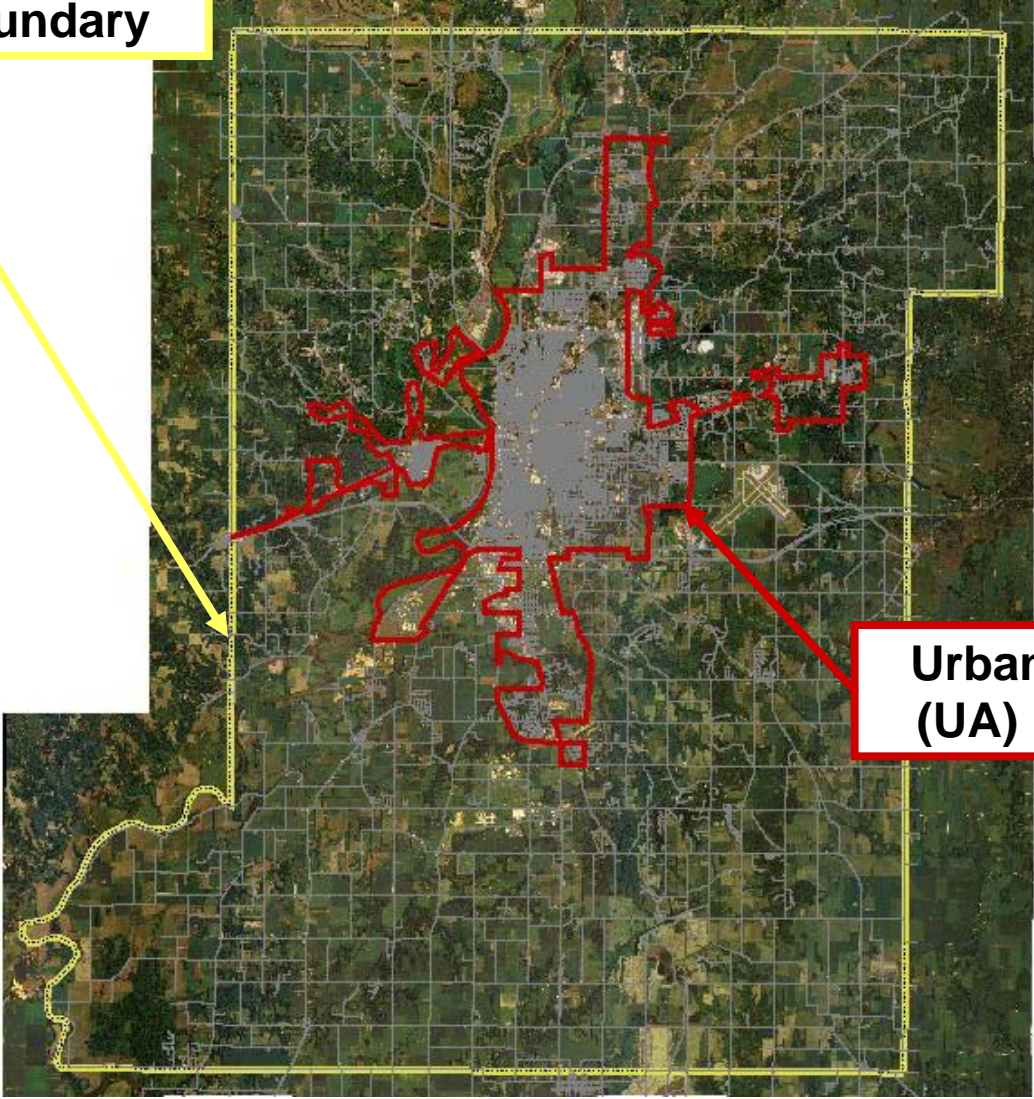
Funding for Federal Fiscal Year 2013 (Oct 1, 2012 – Sep 30, 2013) and Beyond
 TPC Process Approval Date: 07/22/08



Notes:

LPA = Local Public Agency
 TPC = Transportation Policy Committee
 TTC = Transportation Technical Committee
 N = No
 Y = Yes
 Maximum Potential Awards for FFY 2013:
 Projects within the Urbanized Area: \$260,000
 Projects outside the Urbanized Area: \$940,000
 Website Links:
 MPO: http://www.westcentralin.com/transport_programs.htm
 INDOT: <http://www.in.gov/indot/div/projects/LPASection>
 See next page for a map depicting the Metropolitan Planning Area and Urbanized Area Boundaries.

**Metropolitan Planning
Area (MPA) Boundary**



**Urbanized Area
(UA) Boundary**